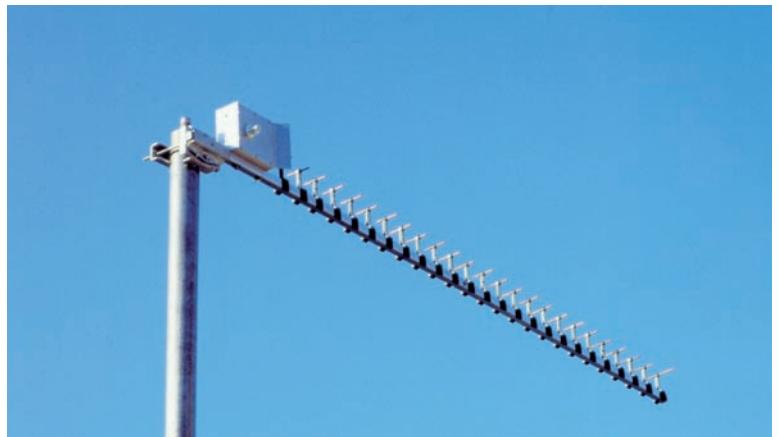


25 elements Yagi antenna

2300 to 2330 MHz

Part Nr. 220725



Electrical data

Radiation at 2320 MHz

Effective electrical length	: 9.67 λ
Isotropic gain	: 18.2 dBi
Aperture angle @ -3 dB	
- E-plane	: 2 x 7.4°
- H-plane	: 2 x 7.6°
First side lobe set	
- E-plane	: - 11 dB @ 22°
- H-plane	: - 9.6 dB @ 22°
Rear protection	: - 27 dB
Average stray radiation	
- E-plane	: - 23 dB
- H-plane	: - 22 dB

Bandwidth

Gain @ -1 dB	: 2200 to 2330 MHz
Nominal impedance	: 50 Ω
Impedance match bandwidth @ SWR <1.3/1.....	: 2280 to 2330 MHz
Acceptable RF power (continuous duty)	: 200 W

Array of 2 or 4 antennas

(optimized stacking distance. from center to center of elements. for minimal side lobe radiation)

- E plane - Electrical distance	: 3.33 λ
- Pratical distance	: 0.43 m
- H plane - Electrical distance	: 3.33 λ
- Pratical distance	: 0.43 m

Mechanical data

Connector	: N
Overall length	: 1.45 m
Mass	: 0.95 kg
Effective wind load	
- Horizontal polarization	: 0.056 m ²
- Vertical polarization	: 0.032 m ²
Approximate wind load (25 m/s - 55 mph)	
- Horizontal polarization	: 2.2 daN
- Vertical polarization	: 1.2 daN
Approximate wind load (45 m/s - 100 mph)	
- Horizontal polarization	: 6.9 daN
- Vertical polarization	: 4.0 daN

Radiation patterns

