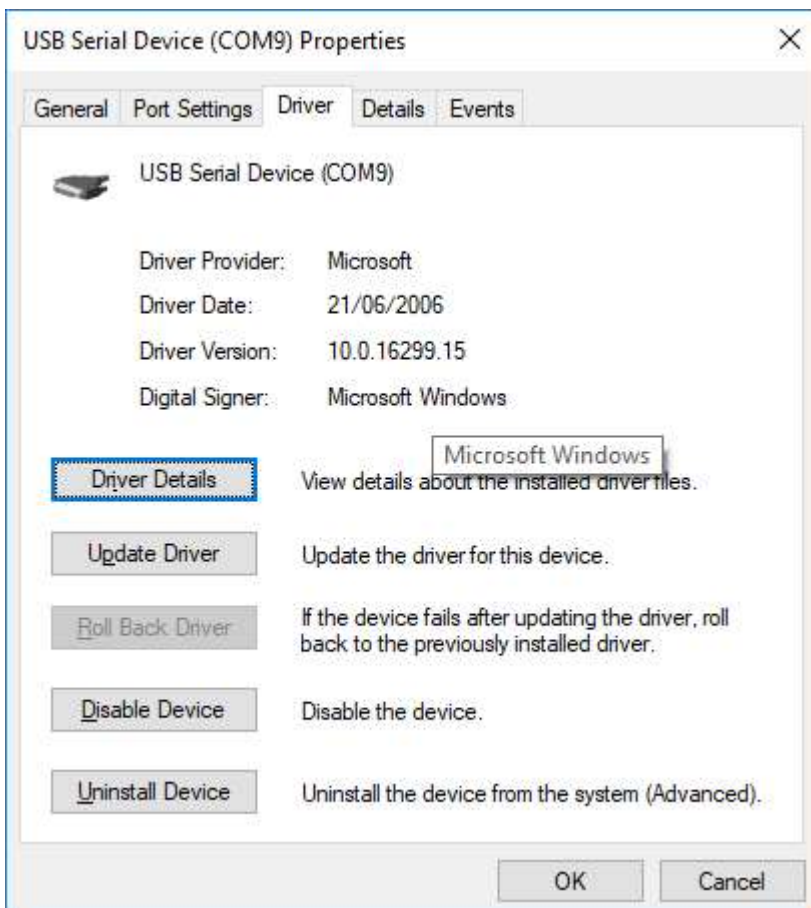
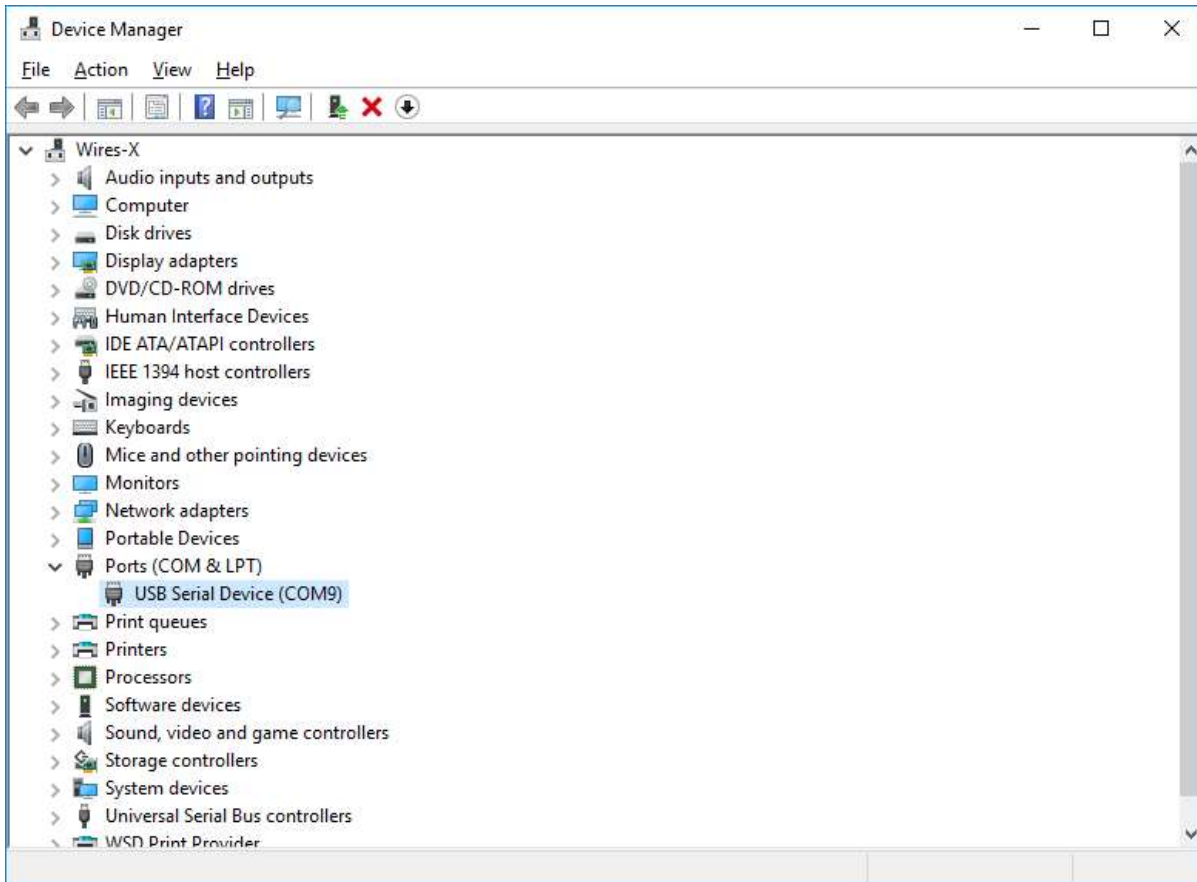
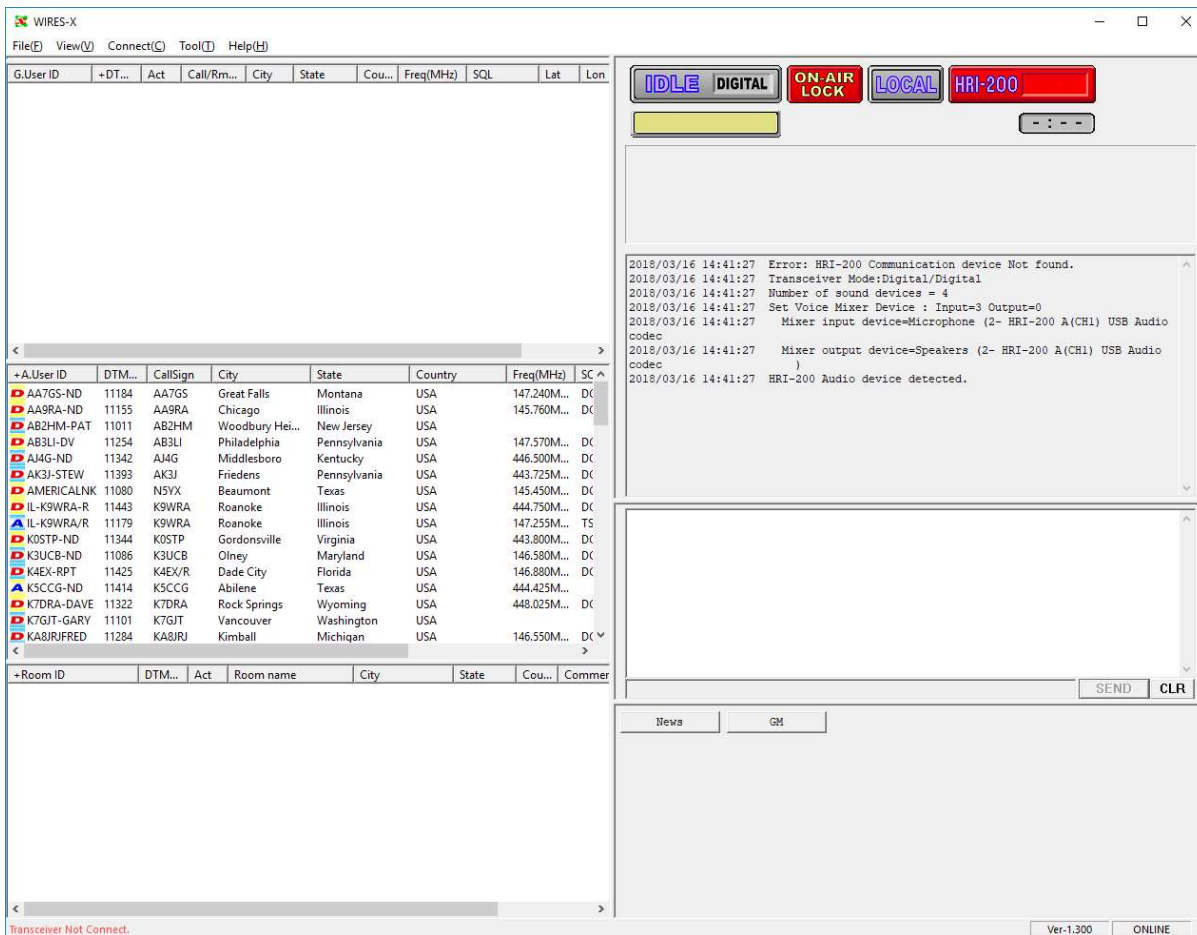


HRI-200 – Incorrect Driver Installed

If the HRI-200 is plugged into the Windows PC without installing the Yaesu HRI-200 driver first windows installs the incorrect Microsoft driver.



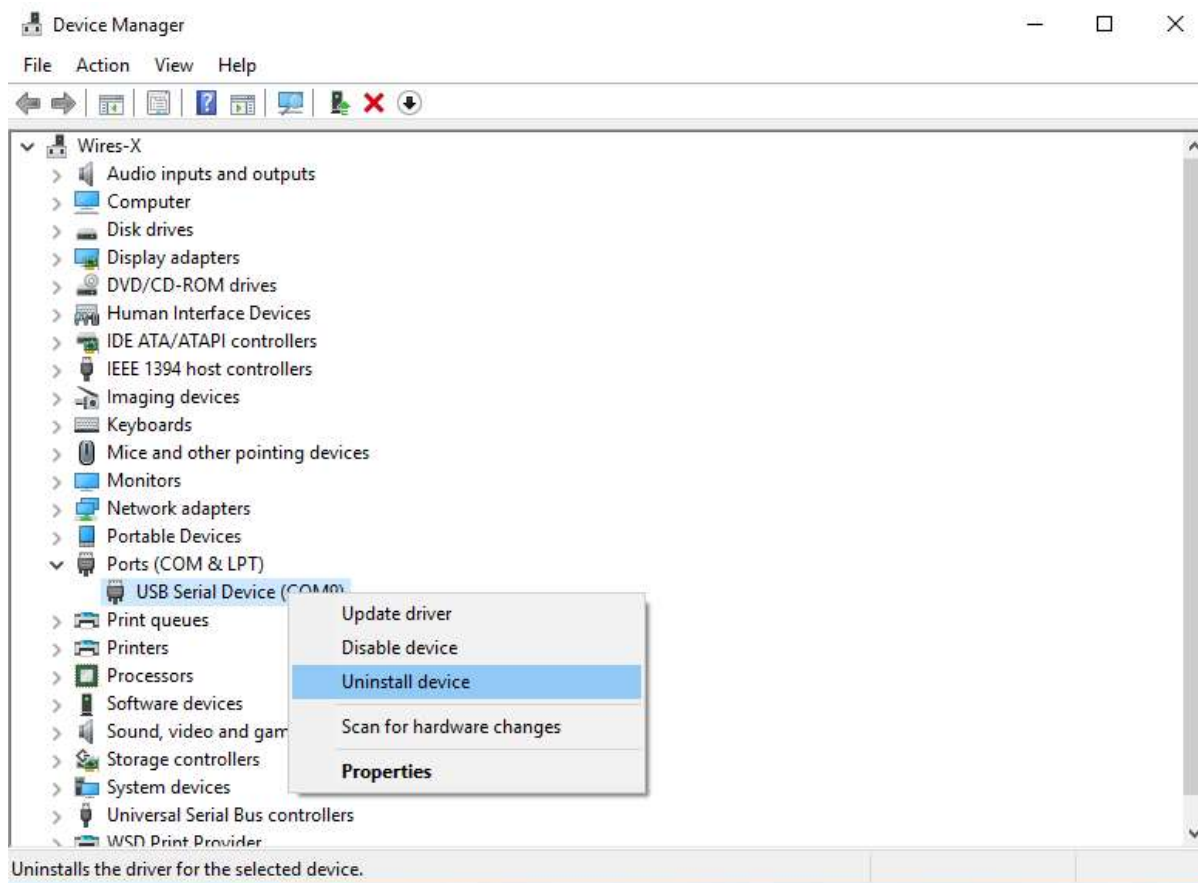
The Microsoft driver is incorrect and causes the following problem in the Wires-X Software



Error: HRI-200 Communication Device not found.

To prevent the problem happening in the first place you should install the HRI-200 driver and Wires-X Software before plugging in the HRI-200 into the PC.

To correct the problem



In device manager, right click the USB Serial Device (COMx), and left click Uninstall device.

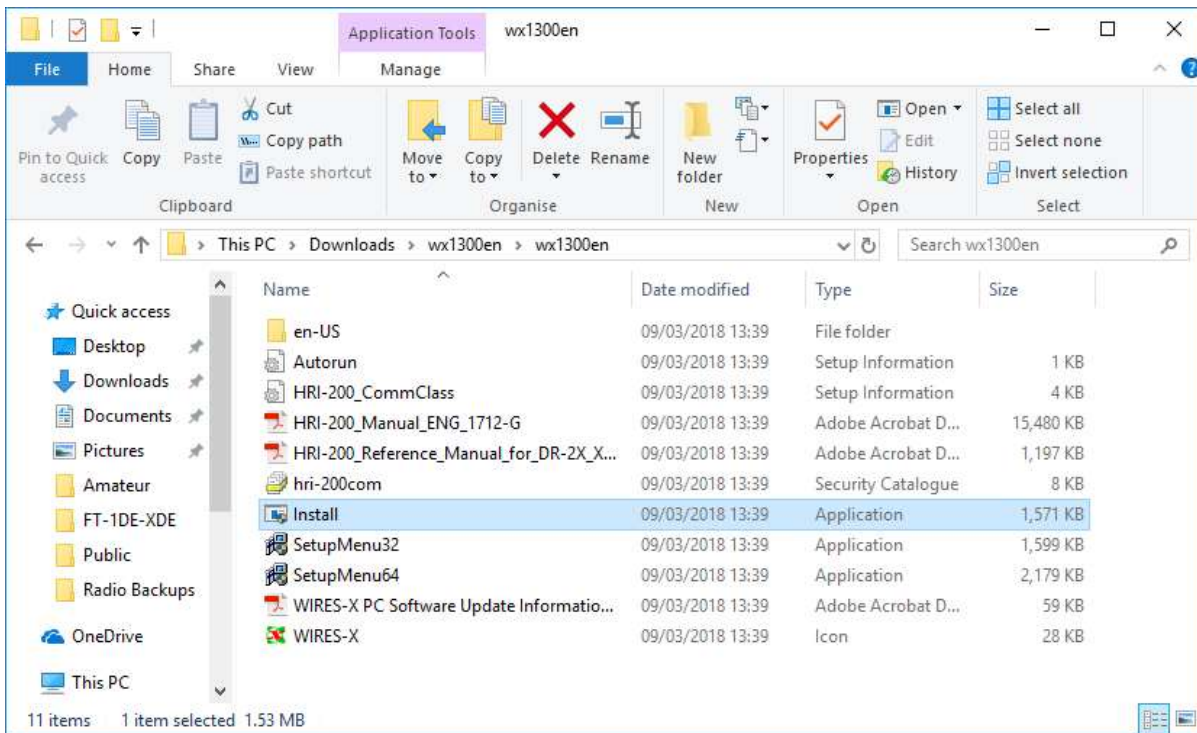


Click Uninstall

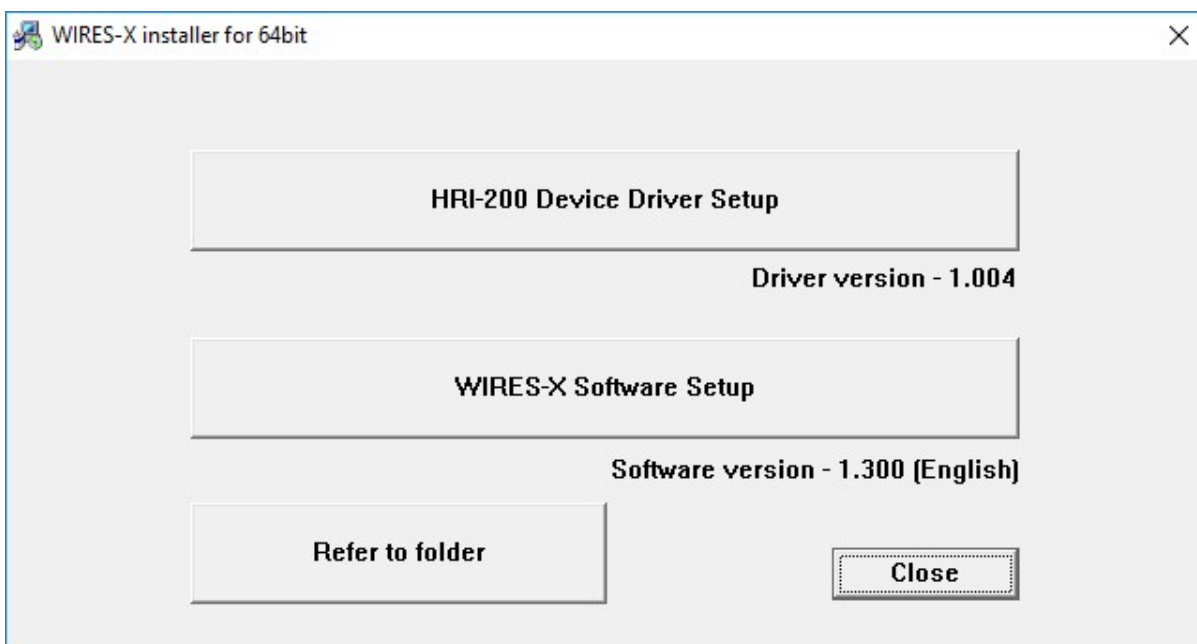
The incorrect Microsoft driver will be uninstalled.

Unplug the USB cable from the HRI-200

Browse to the Wires-X PC installation folder on your PC.



Double click on Install



Click on HRI-200 Device Driver Setup

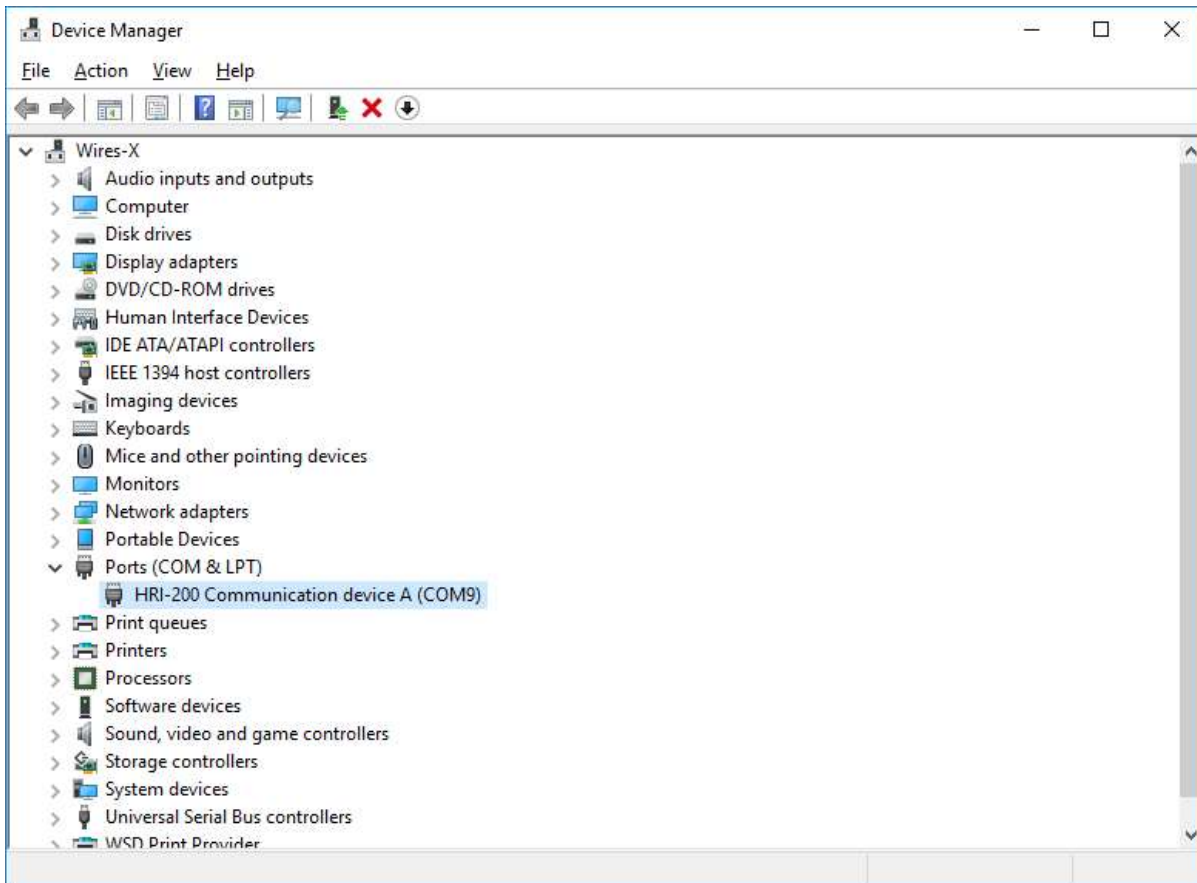


When prompted plug in USB cable between the HRI-200 and PC

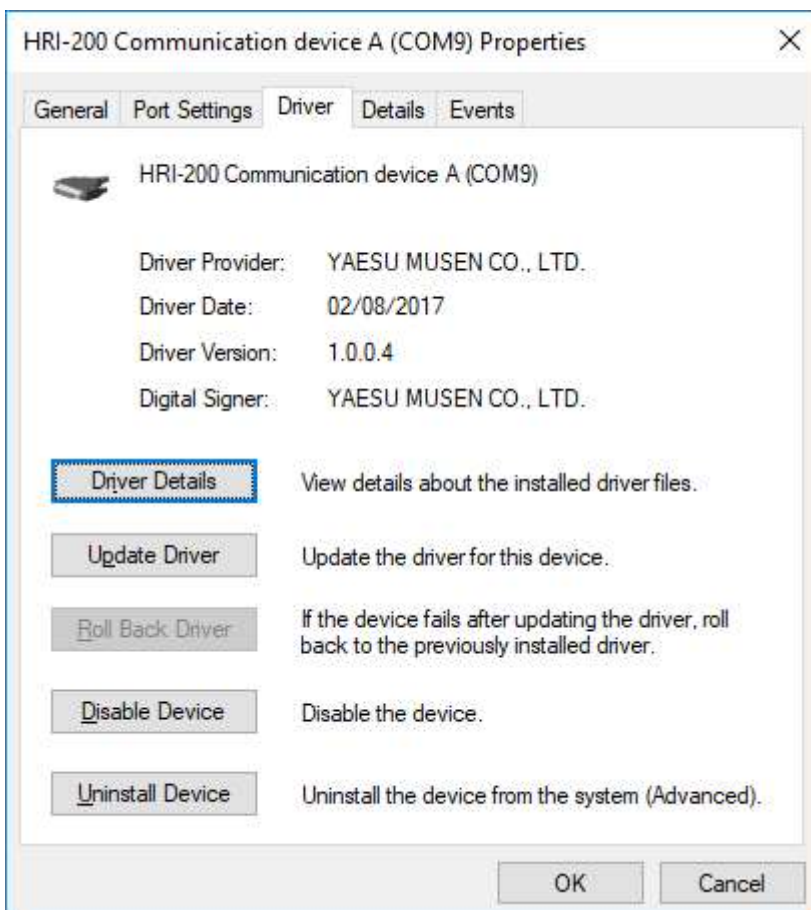
Click OK

The correct driver should now be installed

Launch Device Manager to check correct installation.



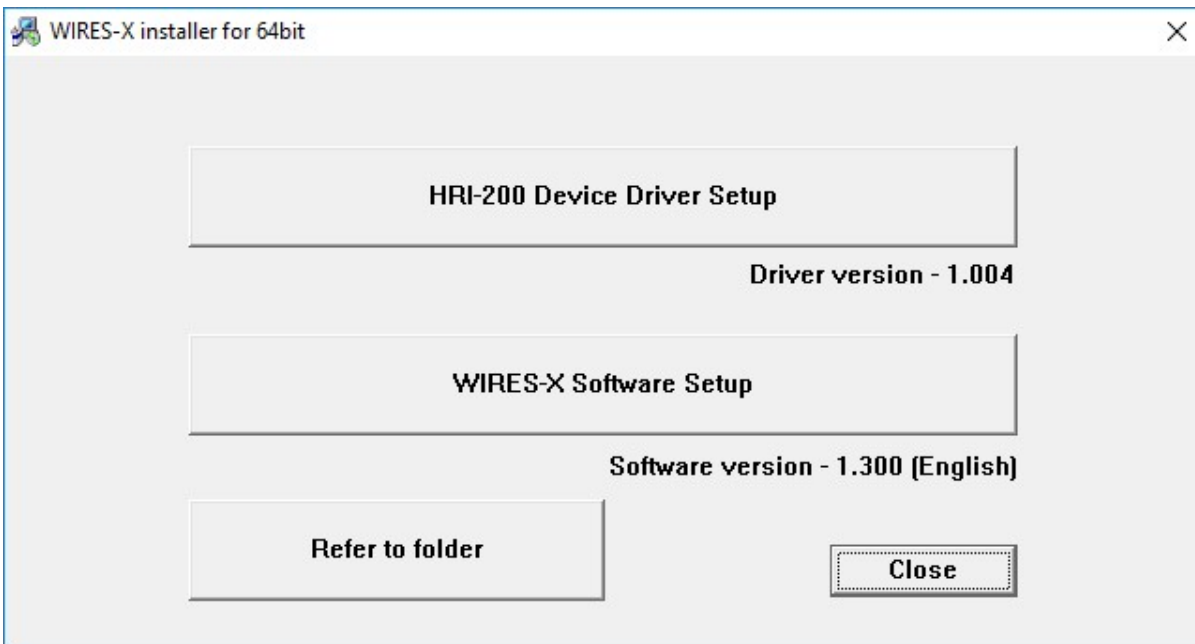
Notice the device is now called HRI-200 Communication device A



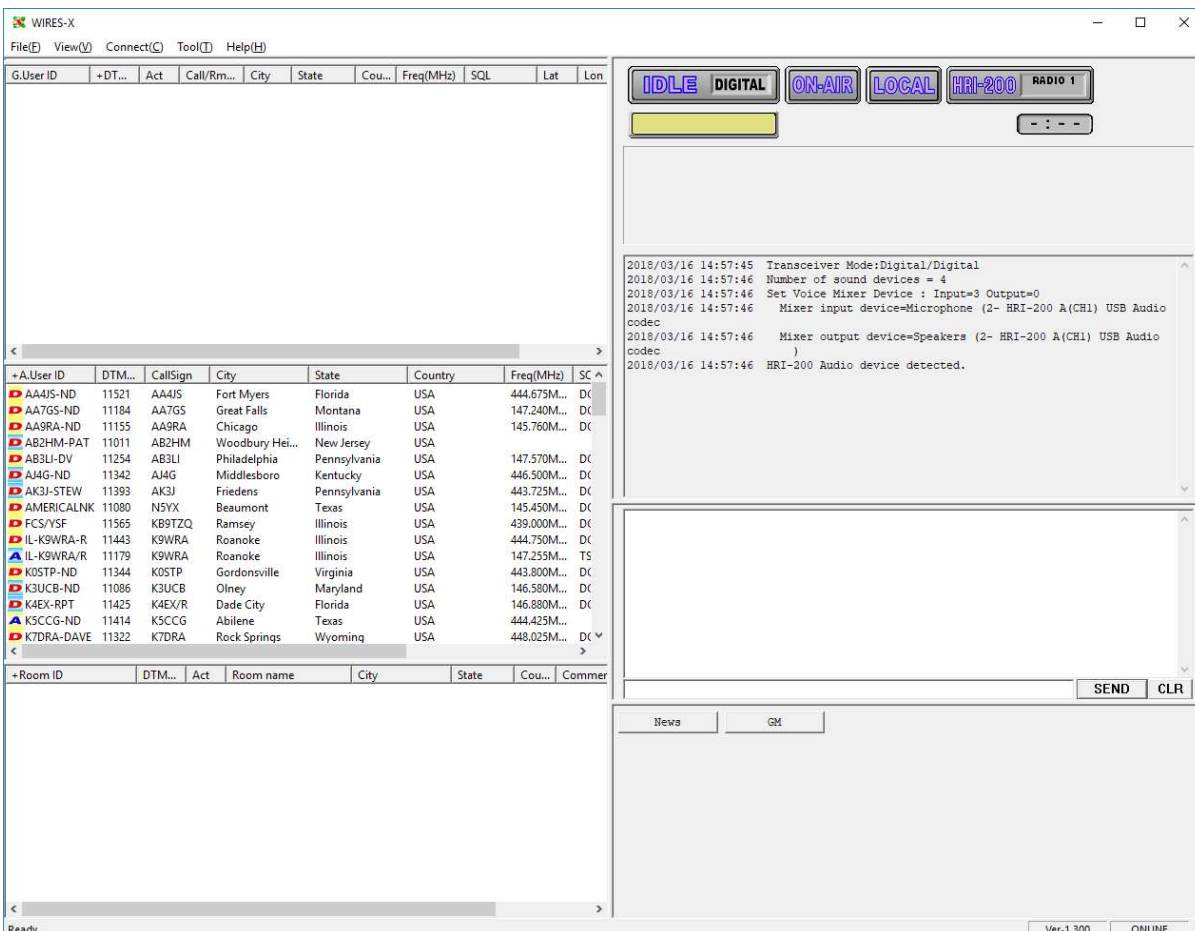
Notice the Driver Provider is now YAESU MUSEN CO., LTD.

The current latest version as of 16/3/2018 is 1.0.0.4 and is shipped with Wires-X V1.2.2.0 and V1.3.0.0

If the wires-x software as not been installed click on the Wires-X Software Setup button and follow the on screen prompts.



After the correct driver has been installed launch the Wires-X software



The HRI-200 and transceiver are now detected correctly and the Wires-X system should now work